



W Abrasives®
your key success factor

Steel Grit

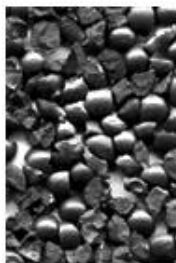
W ABRASIVES Cast Steel Angular Grit is produced by crushing specifically heat treated shot pellets. Service characteristics depend upon hardness selection.

GN Steel Grit: Angular when new, rounds off rapidly in use. Particularly suited to descaling applications.

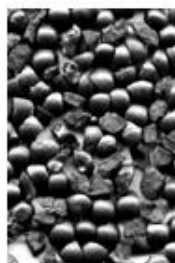
GL Steel Grit: While harder than GN grit, GL also loses sharp edges during use. Appropriate for descaling and surface preparation applications.

GH Steel Grit: With maximum hardness, GH stays angular in the mix, does not shatter readily and has a fast, effective, etching action. Ideal for deep descaling and etched surface requirements. For use mainly with compressed air equipment.

Product	7	8	10	12	14	16	18	20	25	30	35	40	45	50	80	120	200	325	
G12				80% min	90% min														
G14					80% min	90% min													
G16						75% min	85% min												
G18							75% min	85% min											
G25								70% min	80% min										
G40										70% min	80% min								
G50												65% min	75% min						
G80													60% min	75% min					
G120															60% min	70% min			
Screen Number	7	8	10	12	14	16	18	20	25	30	35	40	45	50	80	120	200	325	
Screen Size mm	2.83	2.38	2.00	1.70	1.40	1.18	1.00	0.84	0.71	0.60	0.50	0.425	0.355	0.30	0.180	0.125	0.075	0.045	
Screen Size inches	0.111	0.0937	0.0787	0.0661	0.0555	0.0459	0.0394	0.0331	0.0280	0.0232	0.0165	0.0136	0.0117	0.0117	0.007	0.0049	0.0029		



G10



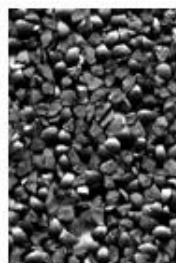
G12



G14



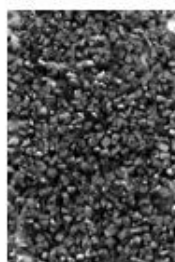
G16



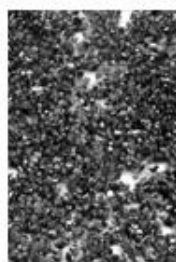
G18



G25



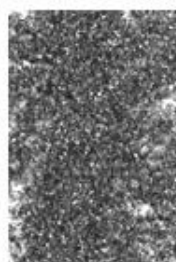
G40



G50



G80



G120